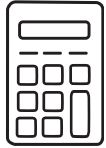


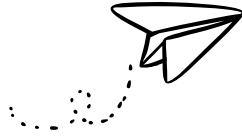
GROVER CLEVELAND

Elementary School

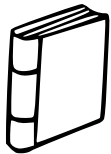
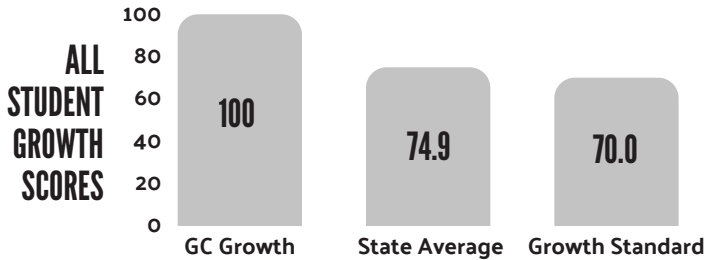


MATH

STUDENT GROWTH EXCEEDS STANDARD AND STATE AVERAGE



554
students



LITERACY

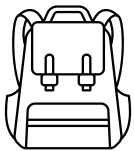
STUDENT GROWTH EXCEEDS STANDARD AND STATE AVERAGE



KEY TO SUCCESS

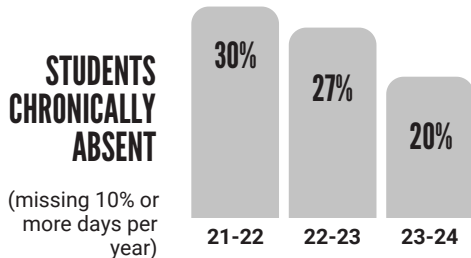


During the 23-24 school year, Grover Cleveland launched their **after-school programming framework**, offering at least two programs per quarter. One of those opportunities included **Spelling Bee Club**, which culminated with a competition at the end of the quarter amongst other community schools. Grover took home the inaugural trophy! After-school programming is a vital key to keeping students engaged and connected to school!



STUDENT ATTENDANCE

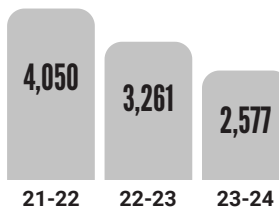
IMPROVED REGULAR ATTENDANCE RATE



(missing 10% or more days per year)

TOTAL ILLEGAL ABSENCES

(Absences that are unexcused and contributing to truancy)



★ 36% DECREASE IN TWO YEARS



UNITED WAY
of Erie County

UNITED WAY
COMMUNITY
SCHOOLS

ERIE'S
PUBLIC SCHOOLS

GROVER CLEVELAND

Elementary School



STUDENT ENRICHMENT

INCREASED ENRICHMENT EXPERIENCES FOR STUDENTS

In the 23-24 school year, Grover Cleveland expanded in-school enrichment opportunities in partnership with their PTSA. As a result:

- every student in every grade got to attend 2 field trips or in-school enrichment experiences
- field trips took place at 13 different locations throughout Erie County
- 7+ community organizations assisted with school-time enrichment experiences



GROVER CLEVELAND SUCCESS STORY: CARING COUGARS



During the 23-24 school year, the “Caring Cougar” program was developed after family surveys revealed a high need for help around the holidays. Each family in need of holiday help could create a wish list for their children, then an anonymous ornament was created and divided amongst 4 neighborhood businesses. Patrons, staff and community members were able to select a snowflake, then supply the gifts for that family. Through this initiative, over 290 Grover Cleveland students received holiday gifts.



COMMUNITY PARTNERSHIPS

ROBUST PARTNERSHIPS MADE GROVER CLEVELAND'S YEAR A GREAT ONE !

In the 23-24 school year, Grover Cleveland was grateful for:

- 144 volunteers contributing over 370 hours of time to events and programs
- Over \$8,000 of in-kind donations from 17 unique donors



SPECIAL THANKS

Grover Cleveland would like to extend a special thank you to the following people and organizations for their support of school events, programs and activities in 23-24 school year:

- Werner Books
- Millcreek Community Church
- Elmwood Presbyterian Church
- Lake Erie Church
- Erie Bank
- Panos Restaurant
- Knox Law
- Schaffner, Knight, Minnaugh & Co., PC
- Erie Free Store
- Nuova Aurora Club
- Iszkula Orthodontics

